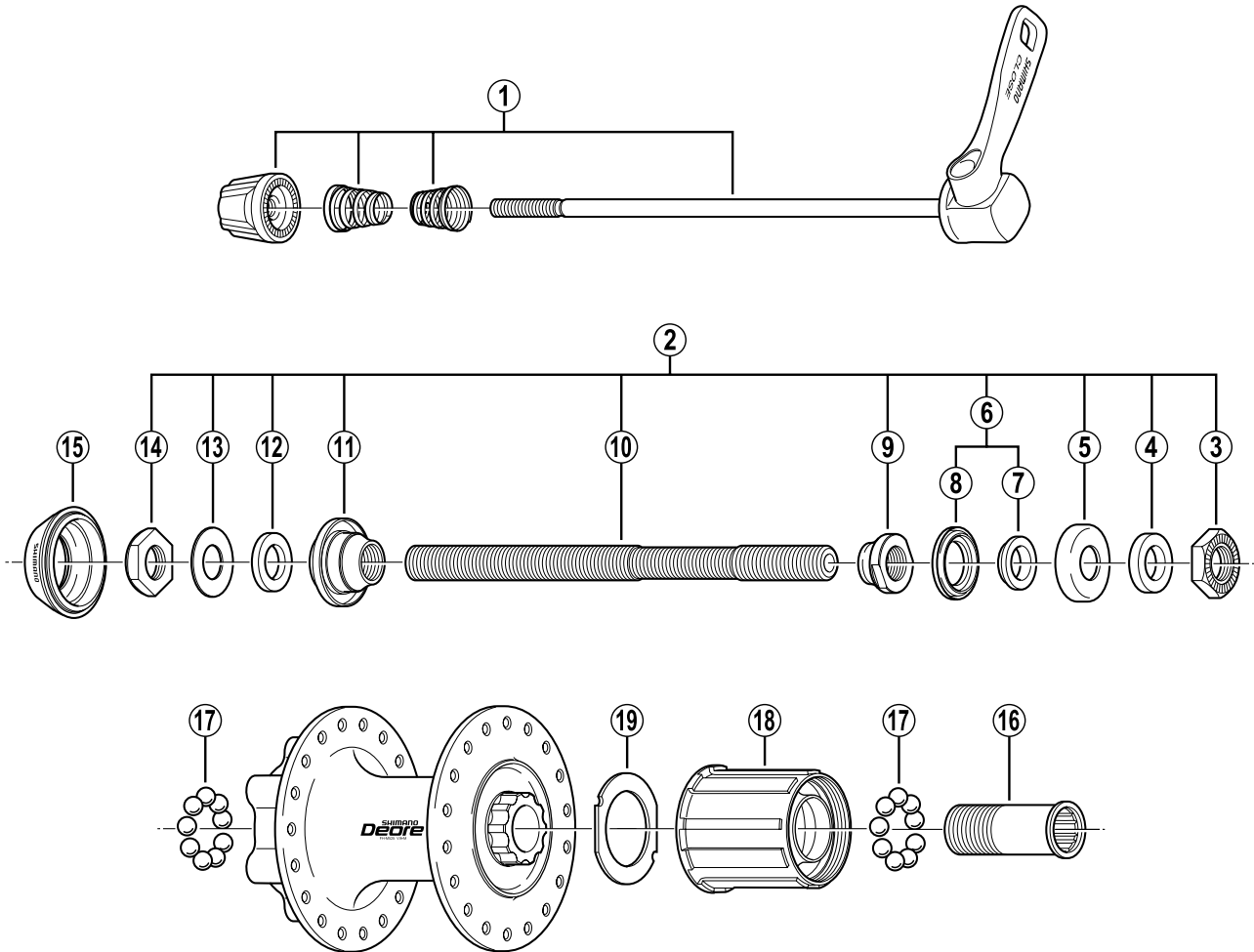


SHIMANO DEORE Freehub (for Disc Brake / 9-Speed)

FH-M525-S Silver Version

FH-M525-L Black Version



• Use with CS-HG50-9 (ar).

Q'TY	ITEM NO.	SHIMANO CODE NO.	DESCRIPTION
*	1	Y-3BL 98010	Complete Quick Release 168 mm (6-5/8") for FH-M525-S/M525-L
		Y-3SP 98020	Complete Quick Release 173 mm (6-13/16") for FH-M525-L
	2	Y-3SP 98010	Complete Hub Axle 146 mm (5-3/4")
	3	Y-220 05011	Right Hand Serated Lock Nut 4.5 mm
	4	Y-301 06800	Right Hand Washer 3.2 mm
	5	Y-3A0 05100	Right Hand Dust Cap
	6	Y-32X 98020	Right Hand Axle Spacer & Seal Ring
	7	Y-31V 03000	Right Hand Axle Spacer 3.7 mm
	8	Y-214 06000	Right Hand Seal Ring
	9	Y-3AE 03000	Right Hand Cone M10 x 9 mm
	10	Y-30K 01200	Hub Axle 146 mm (5-3/4")
	11	Y-3AE 98030	Left Hand Cone (M10 x 16 mm) w/Dust Cover
	12	Y-301 06100	Left Hand Washer 2.3 mm
	13	Y-3AC 09000	Left Hand Washer 0.5 mm
	14	Y-220 05031	Left Hand Serated Lock Nut 4 mm
	15	Y-3BK 03000	Rubber Seal
	16	Y-3BL 03000	Body Fixing Bolt
	17	Y-000 91310	Steel Ball (1/4") 18 pcs.
	18	Y-3A3 98020	Complete Freewheel Body w/Right Hand Dust Cap
	19	Y-3AN 10000	Freewheel Body Washer

Over Lock Nut Dimension: 135 mm (5-5/16")